



DATA BASIN Aquatic Conservation Center



Expanding access to conservation data, visualization tools, people and practical answers

Jeremiah Osborne-Gowey, Jim Stritholt, Brendan Ward, Phillip Callaway, John Bergquist, Tosha Comendant, Dominique Bachelet

The dilemma: The world's aquatic resources are experiencing pressures at an unprecedented scale and aquatic habitats and organisms are experiencing widespread declines. Scientists are generating large volumes of data but practitioners often struggle to extract relevant information. Scientists and practitioners need to bring strategic, science-based approaches to aquatic conservation.



A solution: The Aquatic Conservation Center is being designed and built by the Conservation Biology Institute in partnership with ESRI as part of Data Basin – a new web-based conservation resource intended to link conservation scientists and conservation practitioners (<http://databasin.org>).

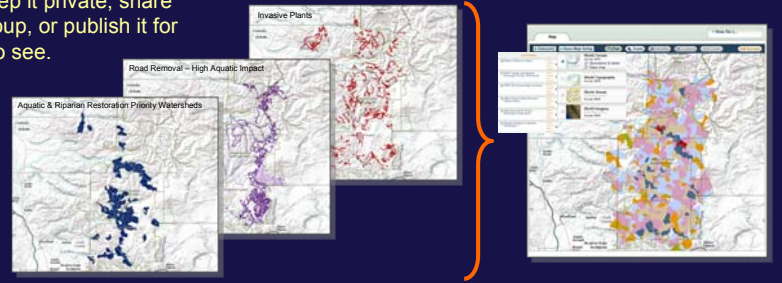
DATASETS

Browse and search for reliable spatial biological, physical, socioeconomic datasets that can be visualized inside Data Basin or downloaded for analysis in a desktop GIS. Contribute your own datasets to the system (with full control over security) for you and others to use.



MAPS

Data Basin provides easy-to-use mapping tools that allow users to customize their own maps from the Data Basin library (including your own contributed datasets) and available internet mapping services. After creating a map, you can keep it private, share it with a group, or publish it for everyone to see.



Priority Restoration Watersheds (Gifford Pinchot Task Force)

PROJECTS

Users can publish their own collections of aquatic datasets, maps, and reports as projects (including studies, atlases, and books) to tell a more complete and rich story.

PEOPLE

A searchable directory of profiles helps users build new connections within the aquatic conservation community. Find collaborators to help solve aquatic conservation problems.



GROUPS

Users can create groups to make it easy to collaborate around specific issues. You can share, analyze, and discuss aquatic-related datasets and maps within a workspace only visible to group members and make key findings available to everyone.

CENTERS



Browse and utilize resources contained in other Data Basin centers. Current centers being developed include the Boreal Information Centre, the Climate Center and the Indigenous Data Center (under consideration).