



PERFORMANCE/PROGRESS REPORT

Agreement Number: L14AC00103

Project Title: BLM OR-WA CESU Climate Data - Identifying Tools Based on What Users Do

Reporting Period

Begin & End Dates: 7/14/15 to 7/14/16

Final Report? ☐ YES ☒ NO

Recipient Organization:

Name: Dominique Bachelet
Address: 136 SW Washington Ave., Suite 202, Corvallis OR 97330
Telephone: 541-368-5807
Email: dominique@consbio.org

Reporting Frequency:

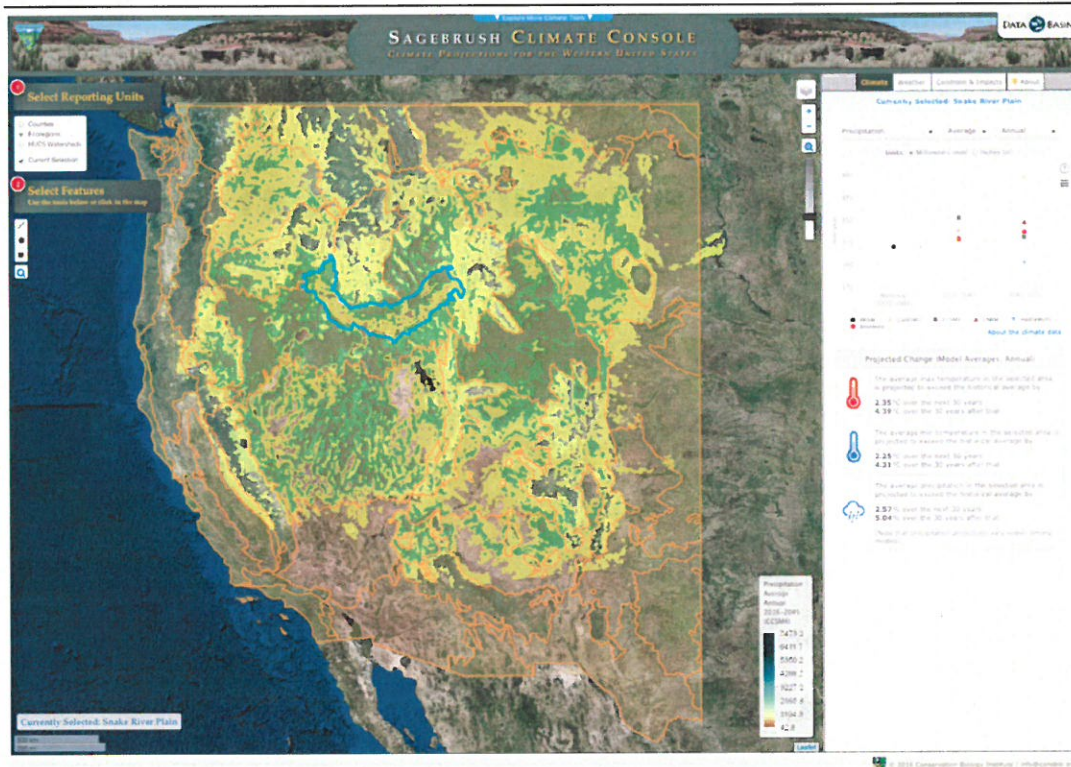
☐ Quarterly
☐ Semi-annual
☒ Annual

Report On:

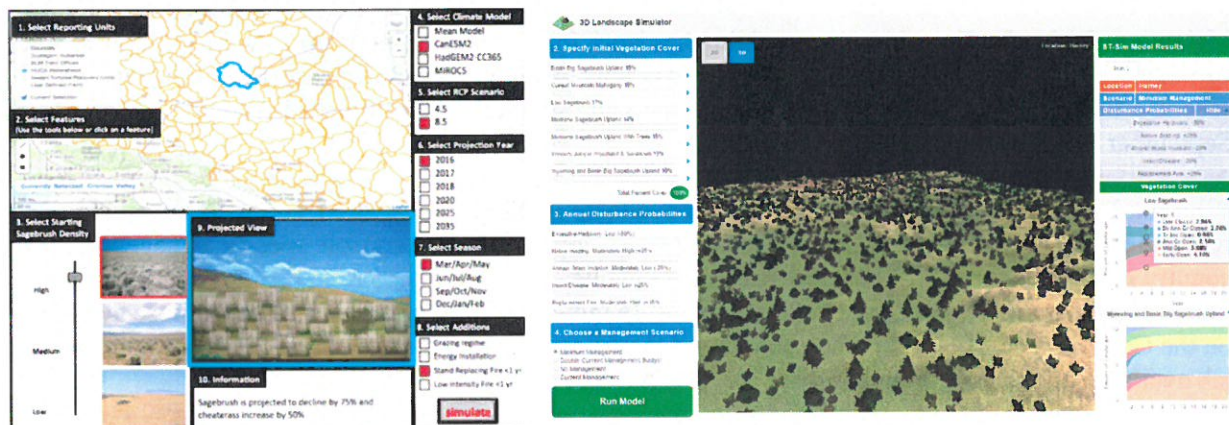
Based on feedback from BLM managers from eastern Oregon and western Idaho from phase I, as well as from the broader region of the Great Basin (using GB-LCC funds), Melanie Brown, as a CBI intern, provided web developer and GIS analyst Mike Gough enough information to modify and make more relevant to managers on-line climate consoles that he was developing at CBI for other funded projects on other geographies (Utah, Southern California and the state of California – <http://climateconsole.org/>).

Melanie, submitted a first paper summarizing her work for phase I of this project, to the journal “Weather, Climate and Society” where it was accepted and is now available as early release. She also prepared a second article summarizing her 2nd set of interviews and should be submitting it before the end of September 2016.

With funds for the second phase of this project available in the spring of 2016, and with Melanie’s recommendations and direct advice, Mike Gough developed a climate console specific to sagebrush country ie Great Basin which has now been made public: <http://climateconsole.org/sagebrush>. A few more improvements are needed: 1) climate exposure indices need to be added (to match those available on the California console), 2) carbon stocks and fluxes need to be added to match the ecosystem services tab available on the California console.



One of the feedbacks from phase I was that managers wanted to see what impacts future climate could have on their land. Melanie designed a blueprint (see below – left) of what managers might be interested in and called them to get specific feedback on her blueprint. With that feedback she started working with Mike Gough and starting in July 2016 with Taylor Mutch on the 3D visualization of the sagebrush landscape simulator (see below - right).



Now funding for Melanie is gone. We are focusing on further developing the landscape simulator and finishing the console. With extra funds, we are also planning on-site training where Mike, Taylor, Dominique and CBI meeting facilitator Katie O'Connor, will demo both the sagebrush climate console and the sagebrush landscape simulator. The first of such meetings will occur Dec 8th in Boise, Idaho.

Following the GB-LCC webinar, we also received feedback that a seed source web tool, built on similar principles as the seedlot source tool CBI is building for the USFS, would be useful. We will gather information during the workshops to help us move in that direction next.

Project accomplishments:

Publications:

Brown, M., and D. Bachelet. 2016. BLM sagebrush managers give feedback on eight climate web applications. *Weather, Climate and Society*. (early release: <http://journals.ametsoc.org/toc/wcas/0/0>)

Brown, M. and D. Bachelet. 2016 (in prep). Great Basin land managers provide detailed feedback about usefulness of two climate information web applications.

Presentations at National Meetings:

Bachelet, D., M. Brown, M. Gough, T. Sheehan, K. Ferschweiler. So you have data, now what? Sixth Annual **Northwest Climate Conference**, Coeur D'Alene Nov 3-5, 2015.

Bachelet, D., M. Brown, and M. Gough. Is this what you need? Direct feedback help climate change information exchange. Abstract # PA33B-2186. **AGU Fall Meeting**, San Francisco, CA, 13-18 Dec **2015**. ePoster: <https://agu.confex.com/agu/fm15/meetingapp.cgi/Paper/65469>.

Recorded Presentations:

Nov 12, 2015 - public CBI **Webinar** available on-line **Can collaboration between climate scientists and land managers lead to more useable climate tools?** (<http://consbio.org/products/webinars/can-collaboration-between-climate-scientists-and-land-managers-lead-more-useable-climate-tools>)

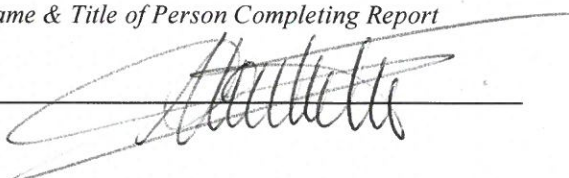
June 27, 2016 – public GB-LCC **Webinar** available on-line **Is this what you need? Direct feedback helps climate change information exchange**. (<https://www.youtube.com/watch?v=U-CjufXBnrI>)

Certification: I certify to the best of my knowledge and belief that this report is correct and complete for performance of activities for the purposes set forth in the award documents.

Dominique Bachelet, senior climate change scientist

Printed Name & Title of Person Completing Report

Signature



September 7, 2016

Date Submitted

