

Figure 1. Rancho Guejito within the South Coast Ecoregion.

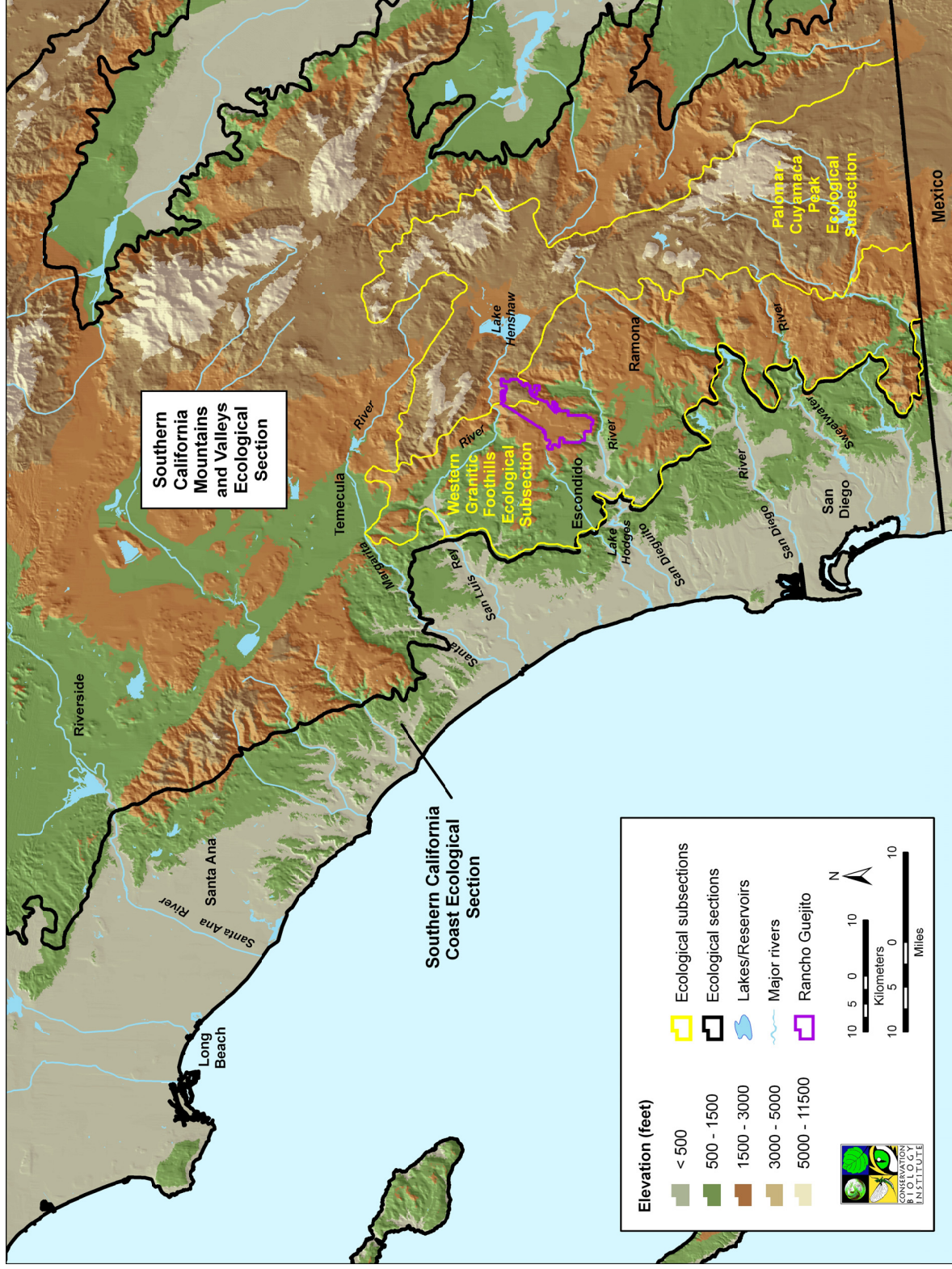


Figure 2. Biogeographic divisions of the South Coast Ecoregion, with elevation gradients.

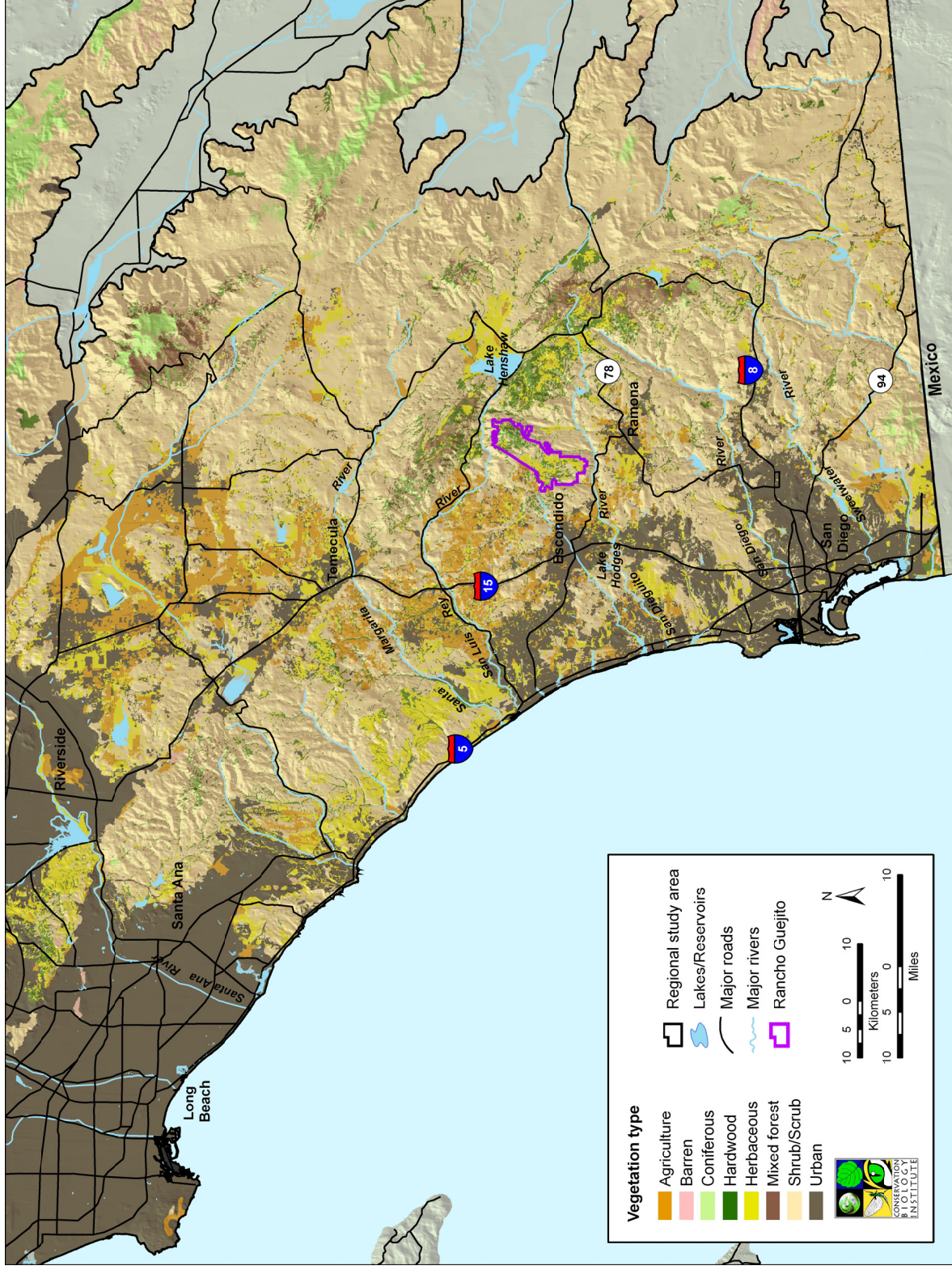


Figure 3. Vegetation communities of the region.

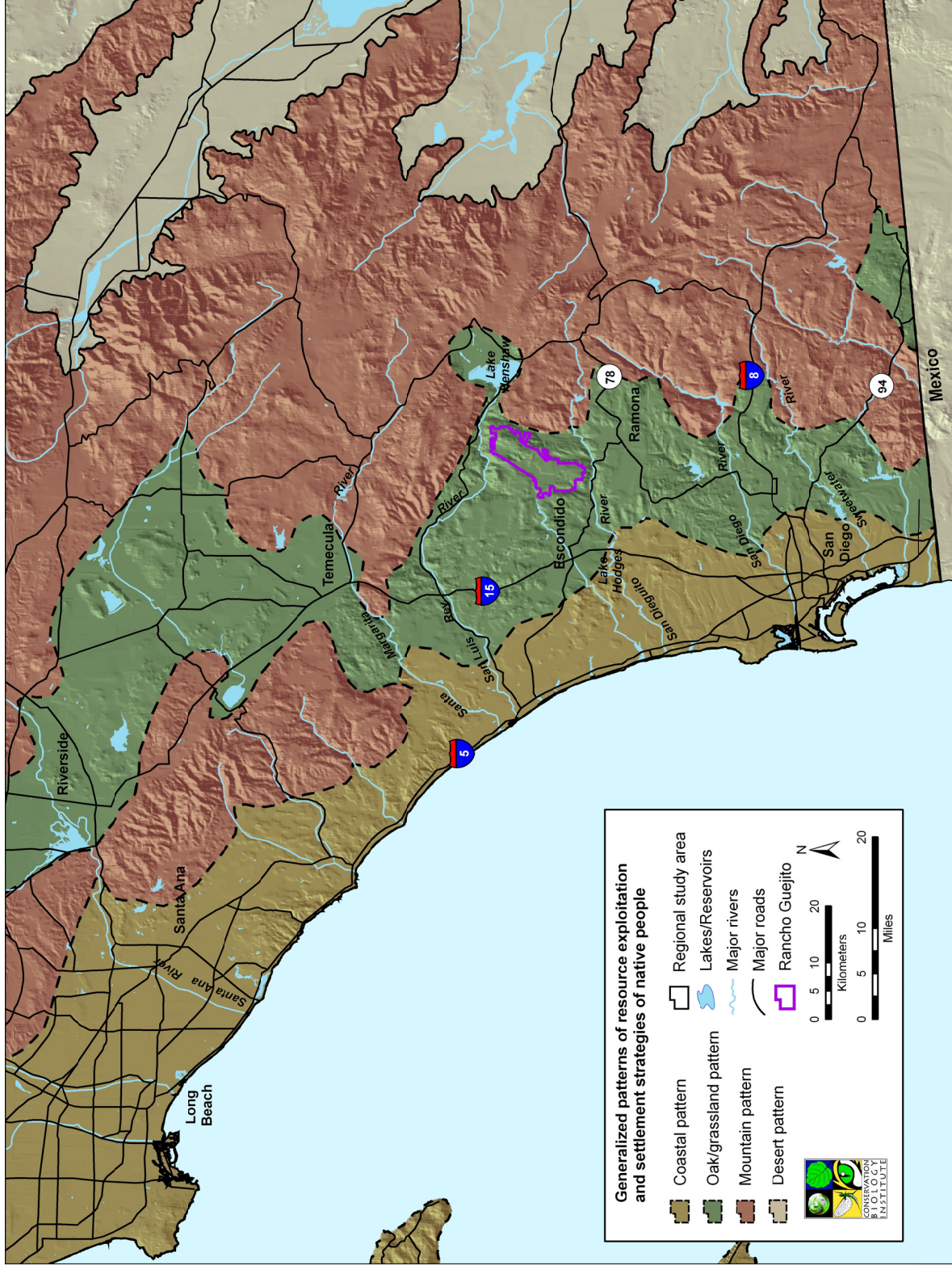


Figure 4. Generalized patterns of resource exploitation and settlement strategies of native people.

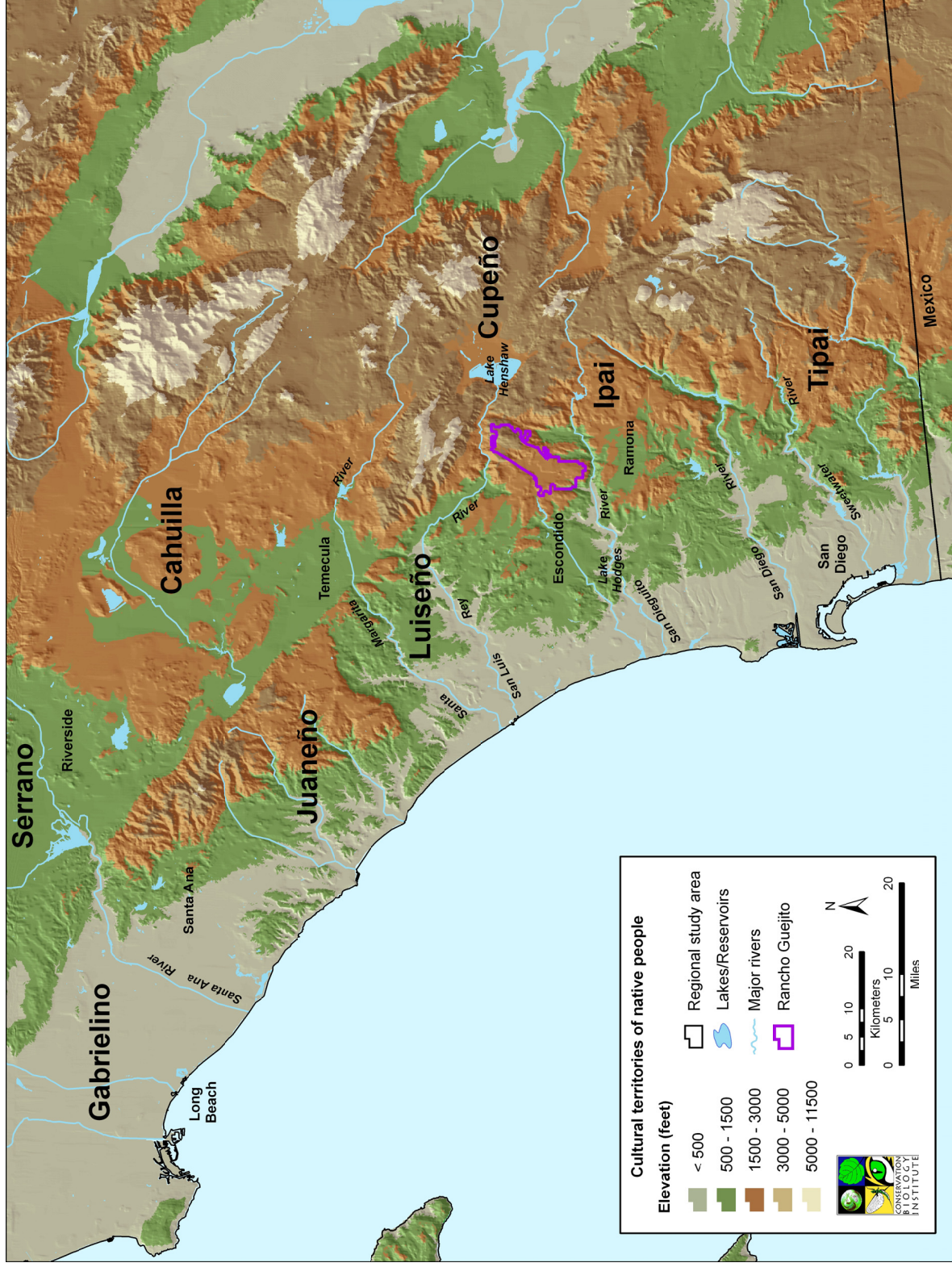


Figure 5. Cultural territories of native people in the region.

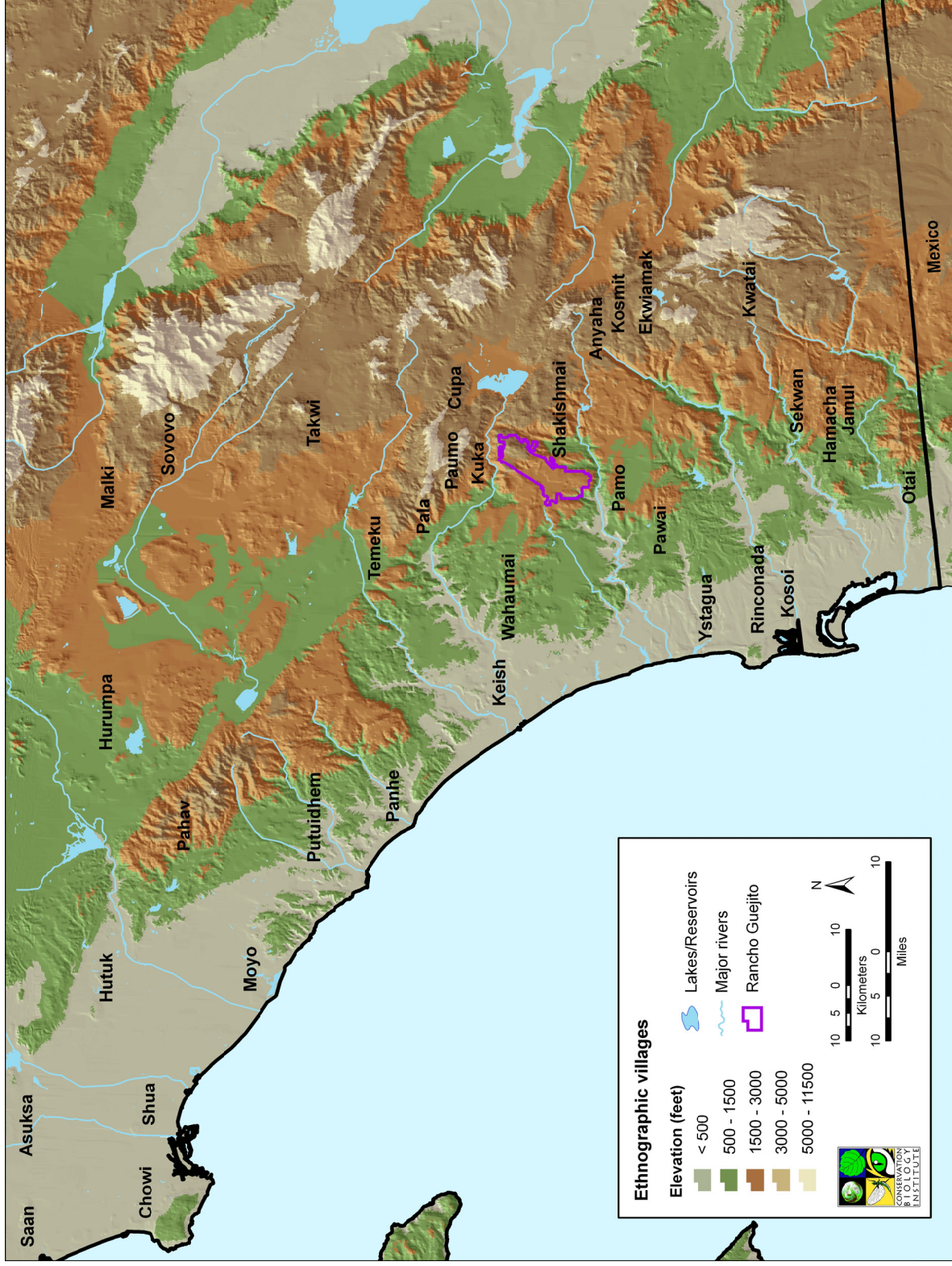


Figure 6. Ethnographic villages.

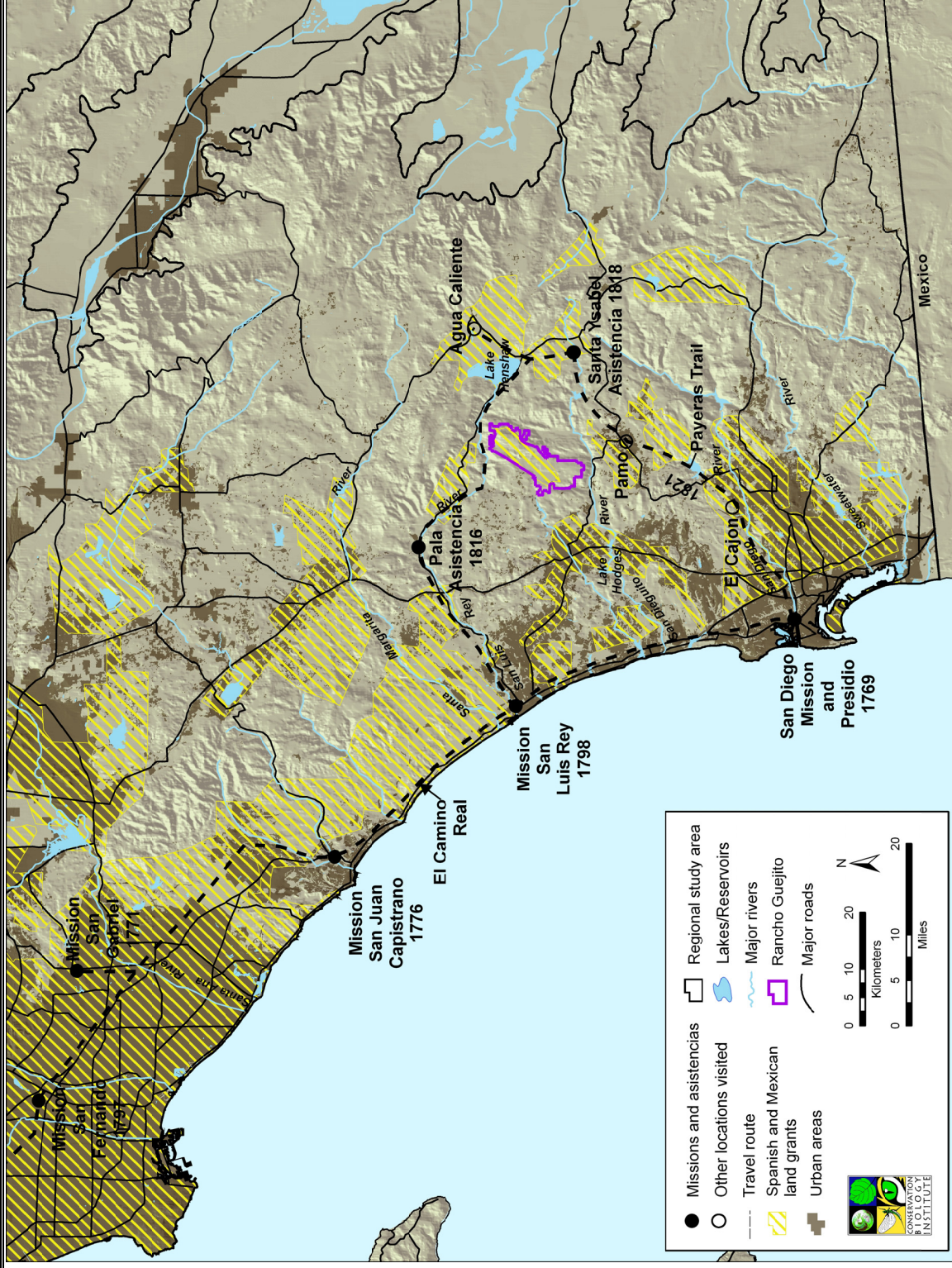


Figure 7. Ranchos (land grants) of Southern California (1775-1846) and travel routes of the missionaries, shown with areas of current urbanization.

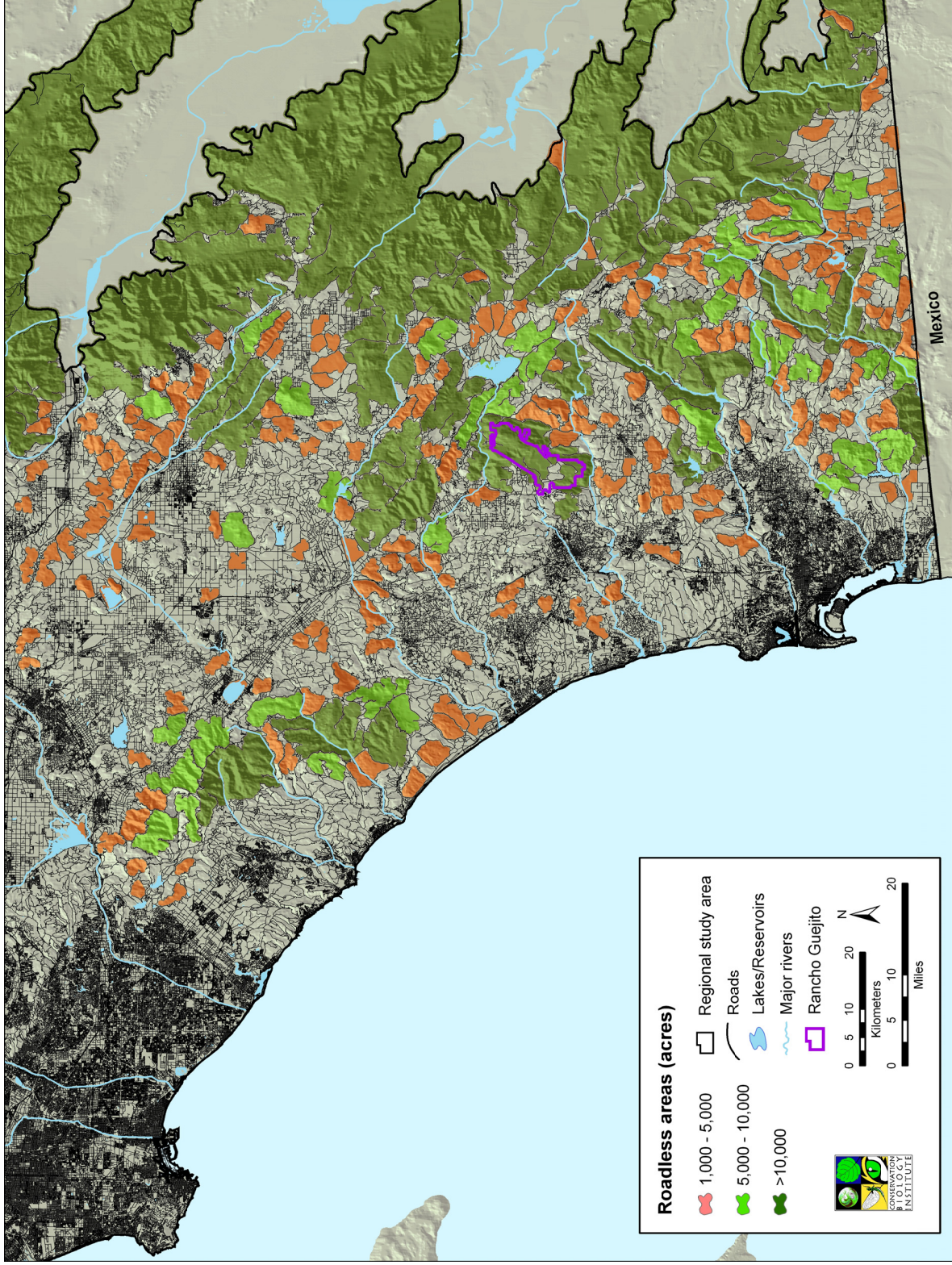


Figure 8. Roads and roadless areas in the region.

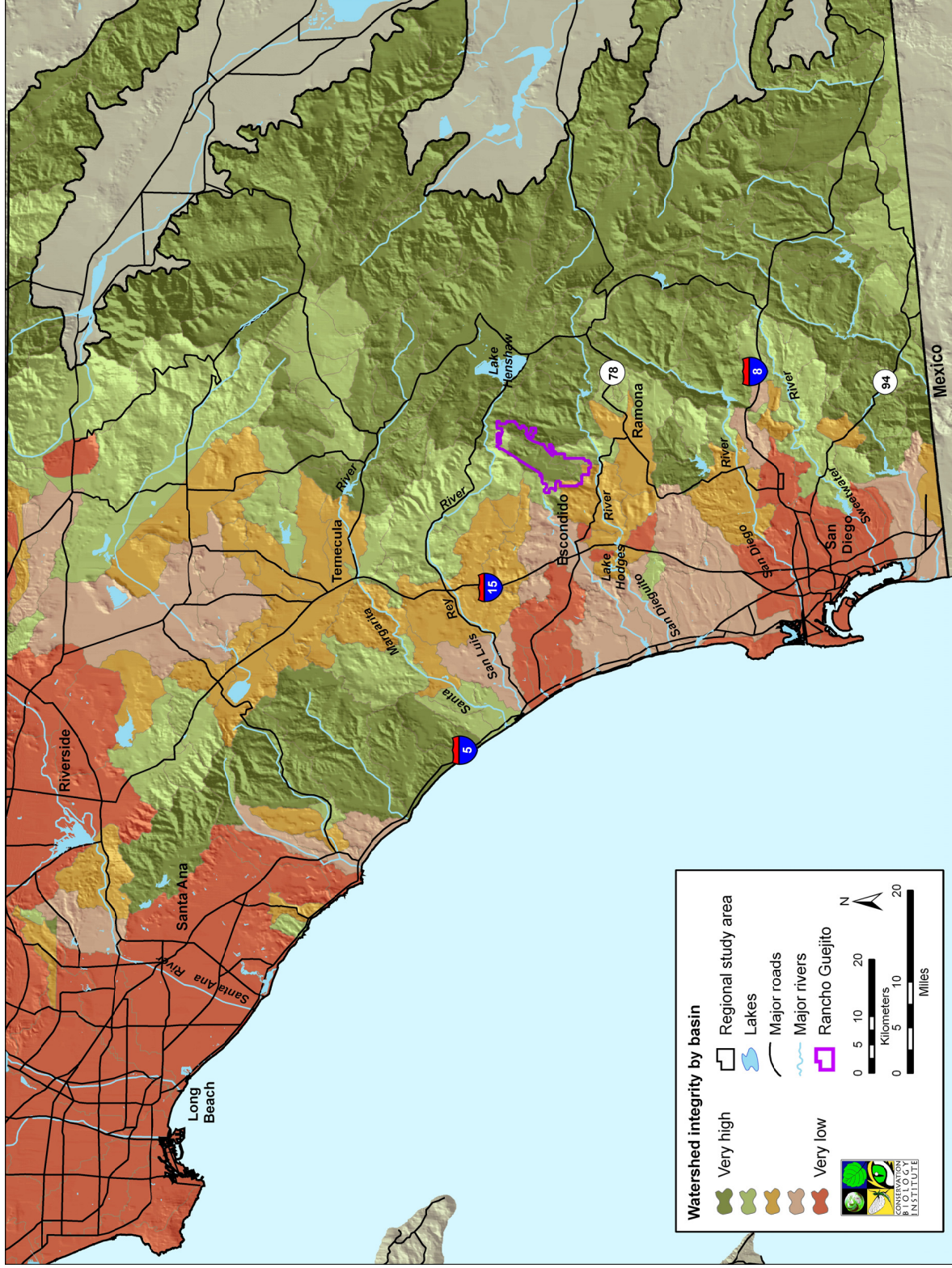


Figure 9. Ecological integrity of watershed basins in the region.

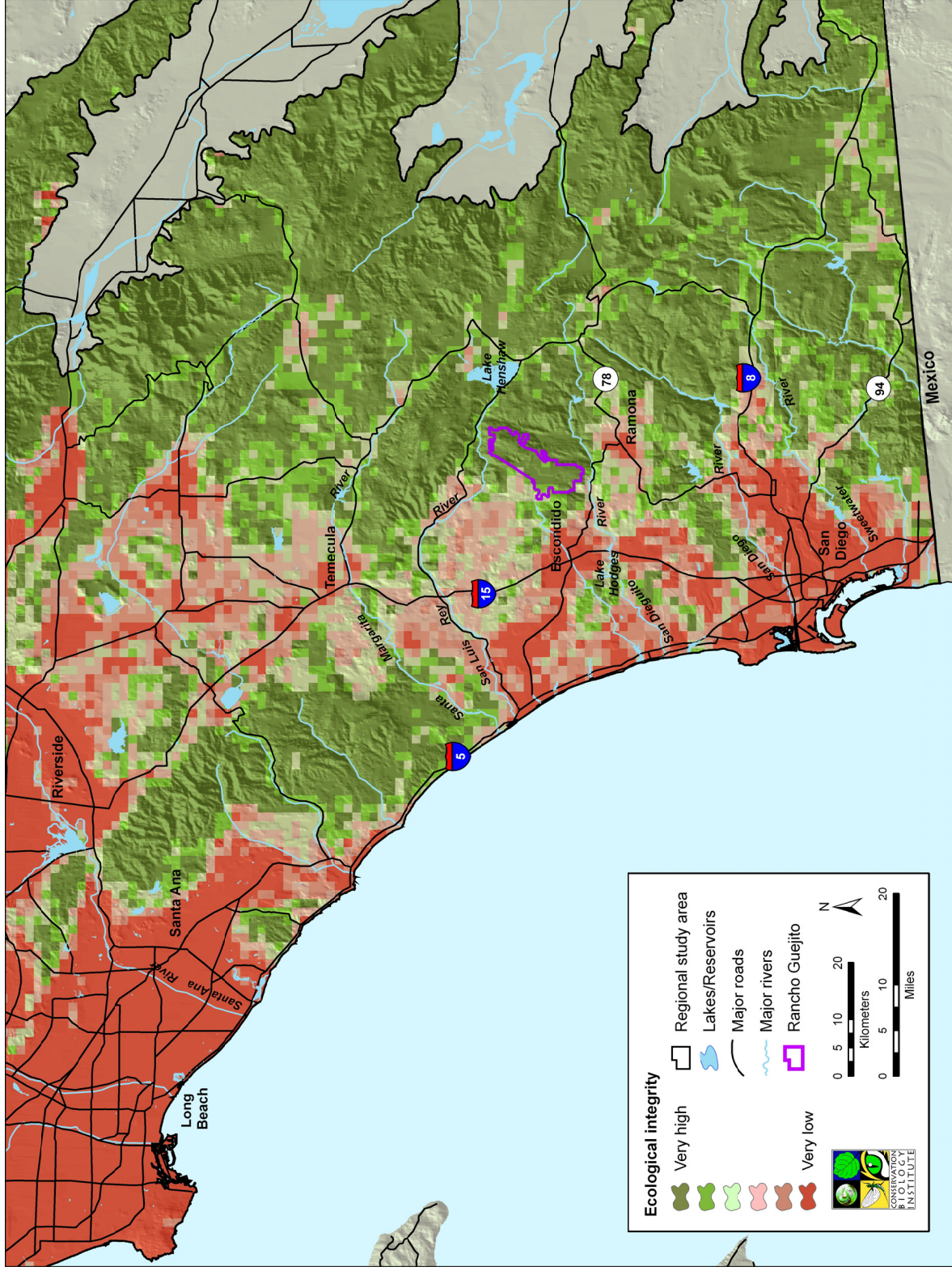


Figure 10. Ecological integrity of terrestrial systems in the region.

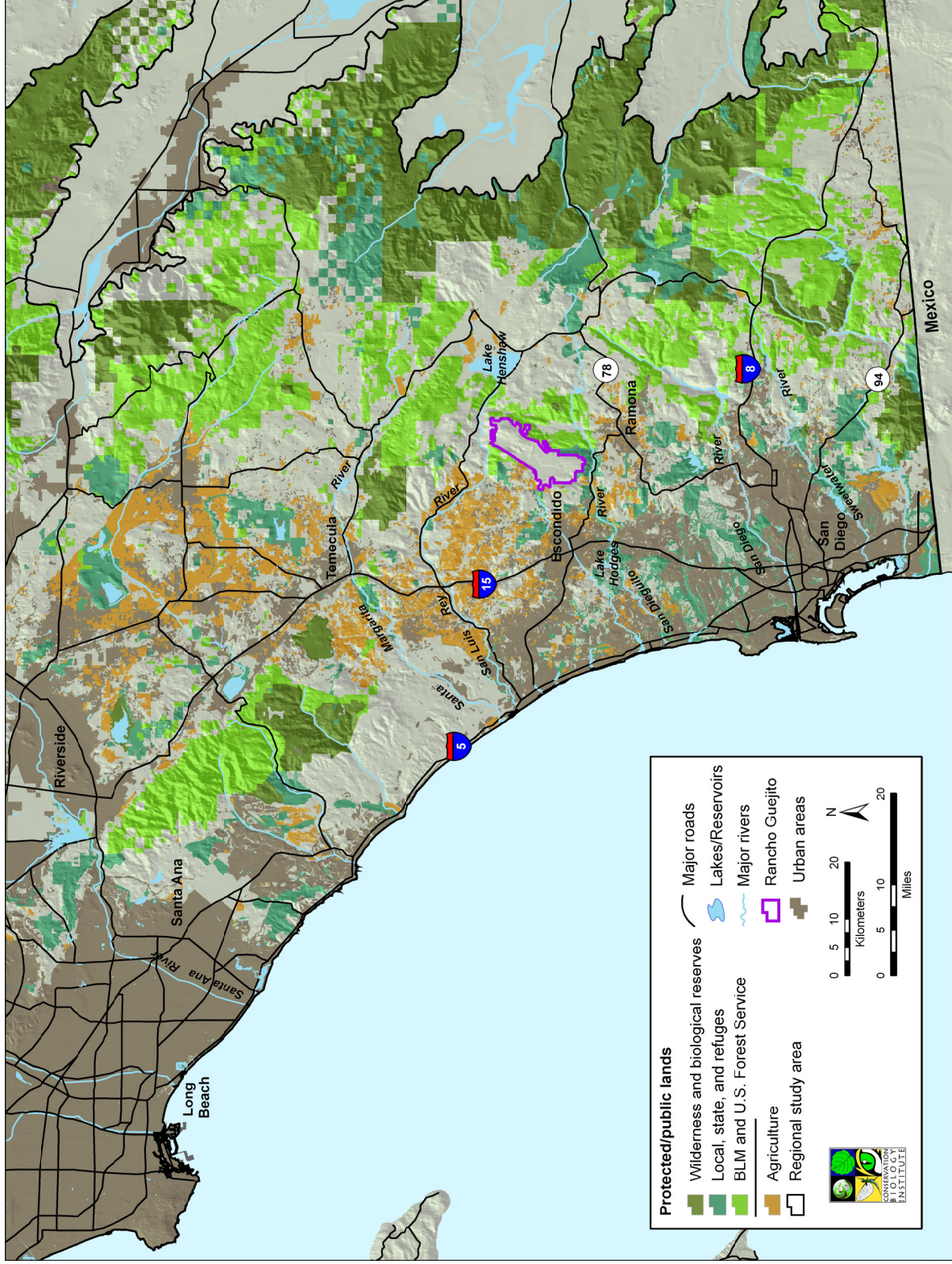


Figure 11. Patterns of resource conservation in the region.

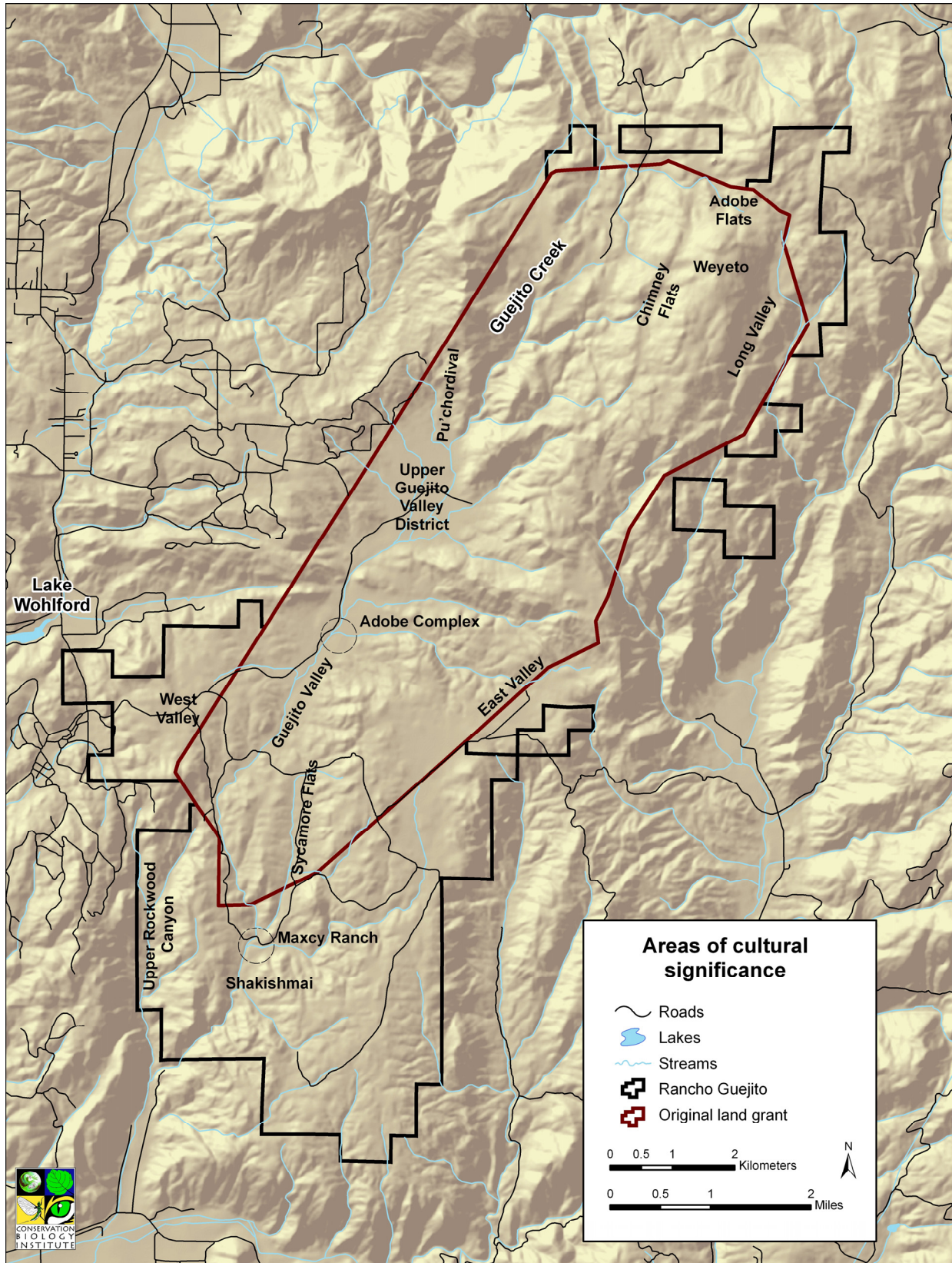


Figure 12. Areas of cultural significance on Rancho Guejito.

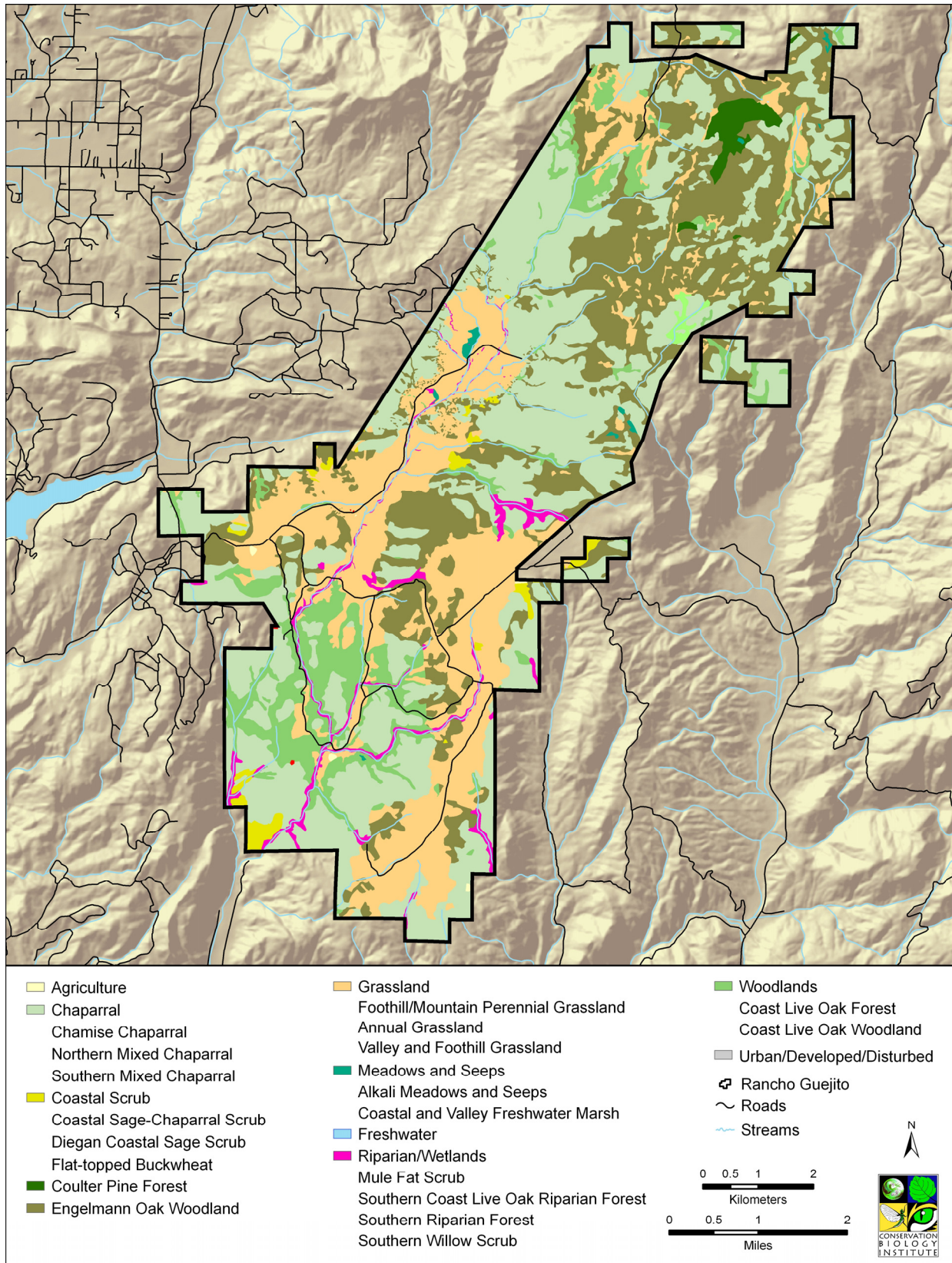


Figure 13. Diversity of vegetation communities on Rancho Guejito.

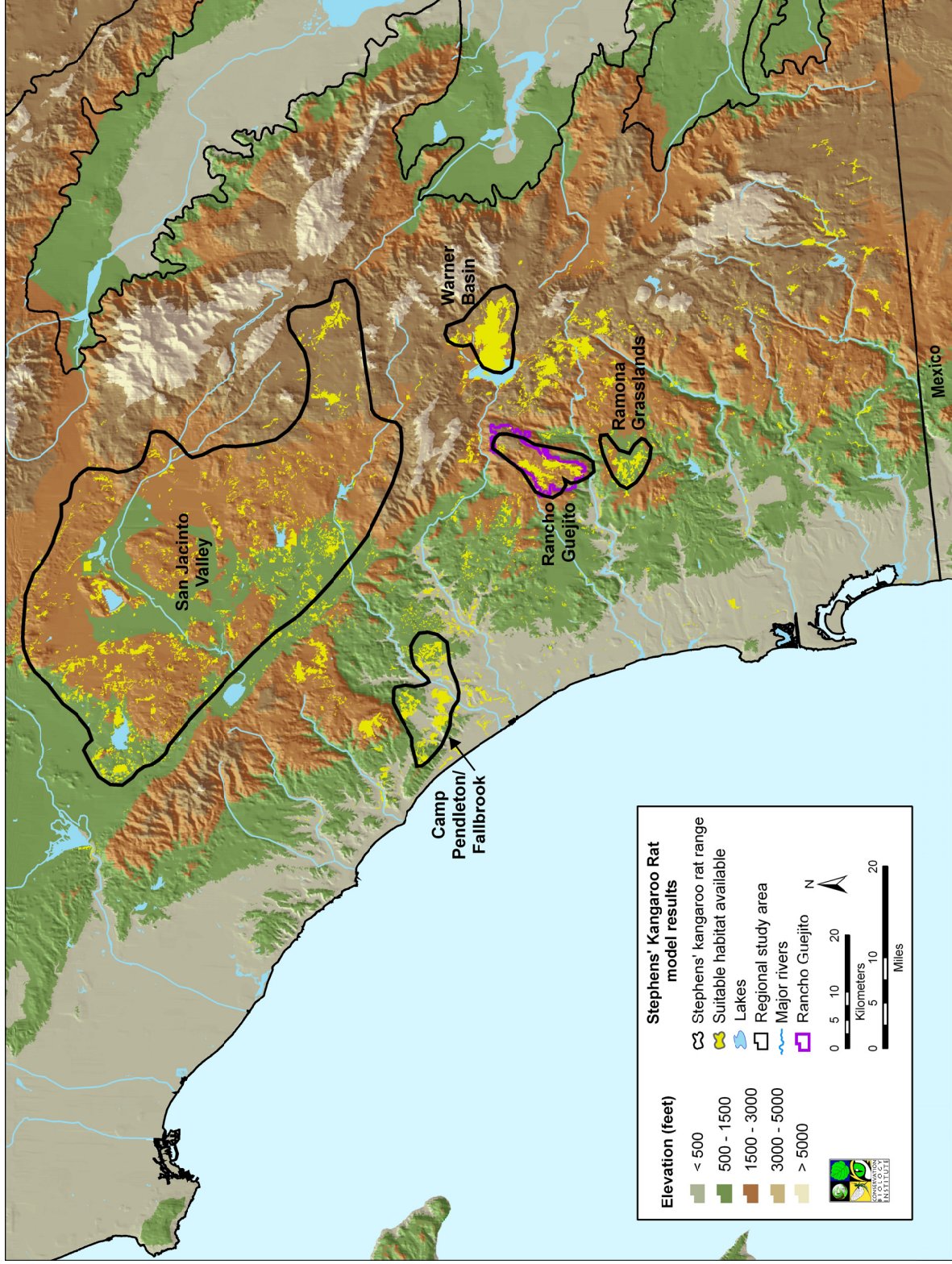


Figure 14. Predicted Stephens' kangaroo rat distribution in the region.

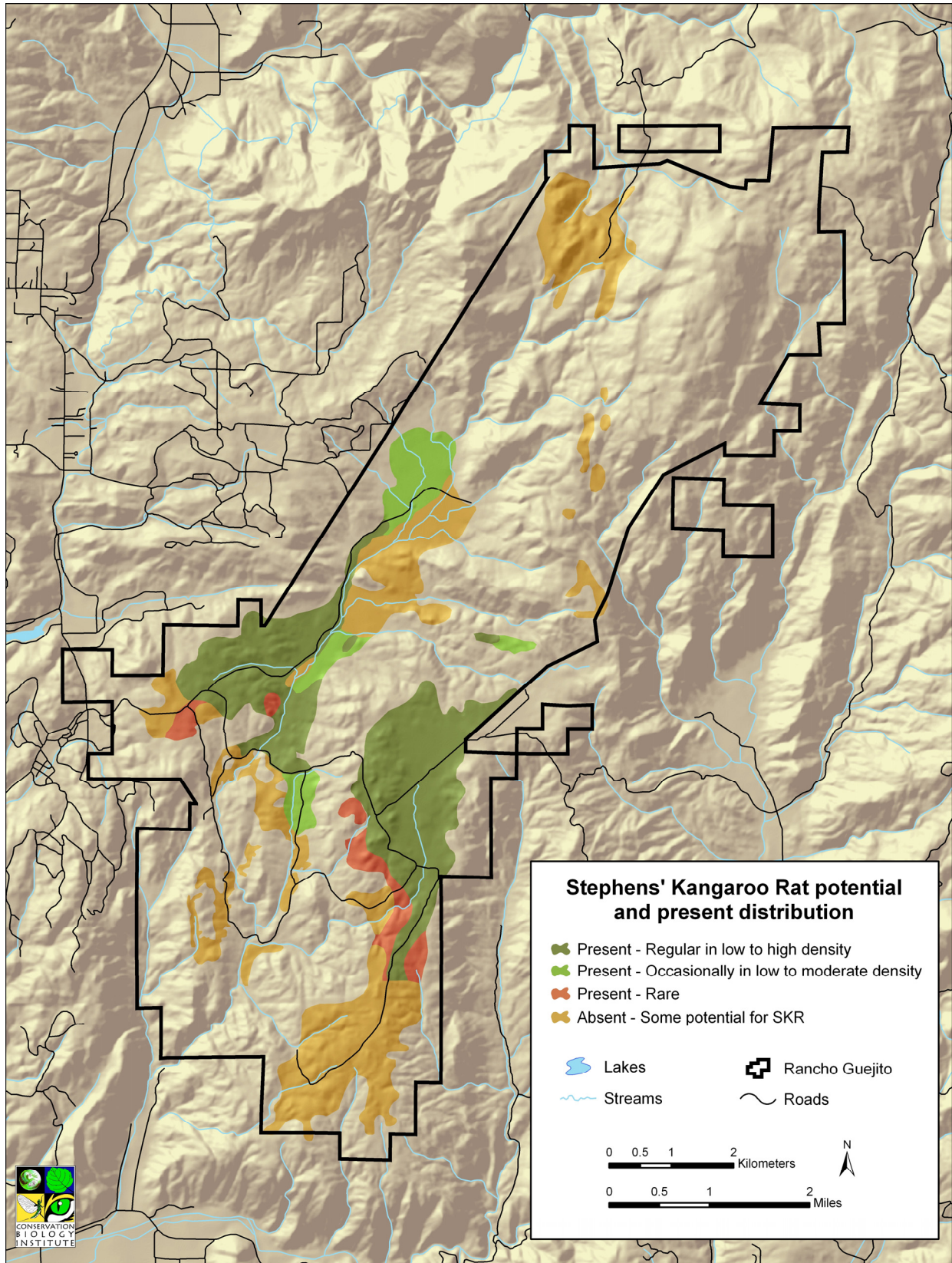


Figure 15. Stephens' kangaroo rat distribution on Rancho Guejito (Montgomery 2005).

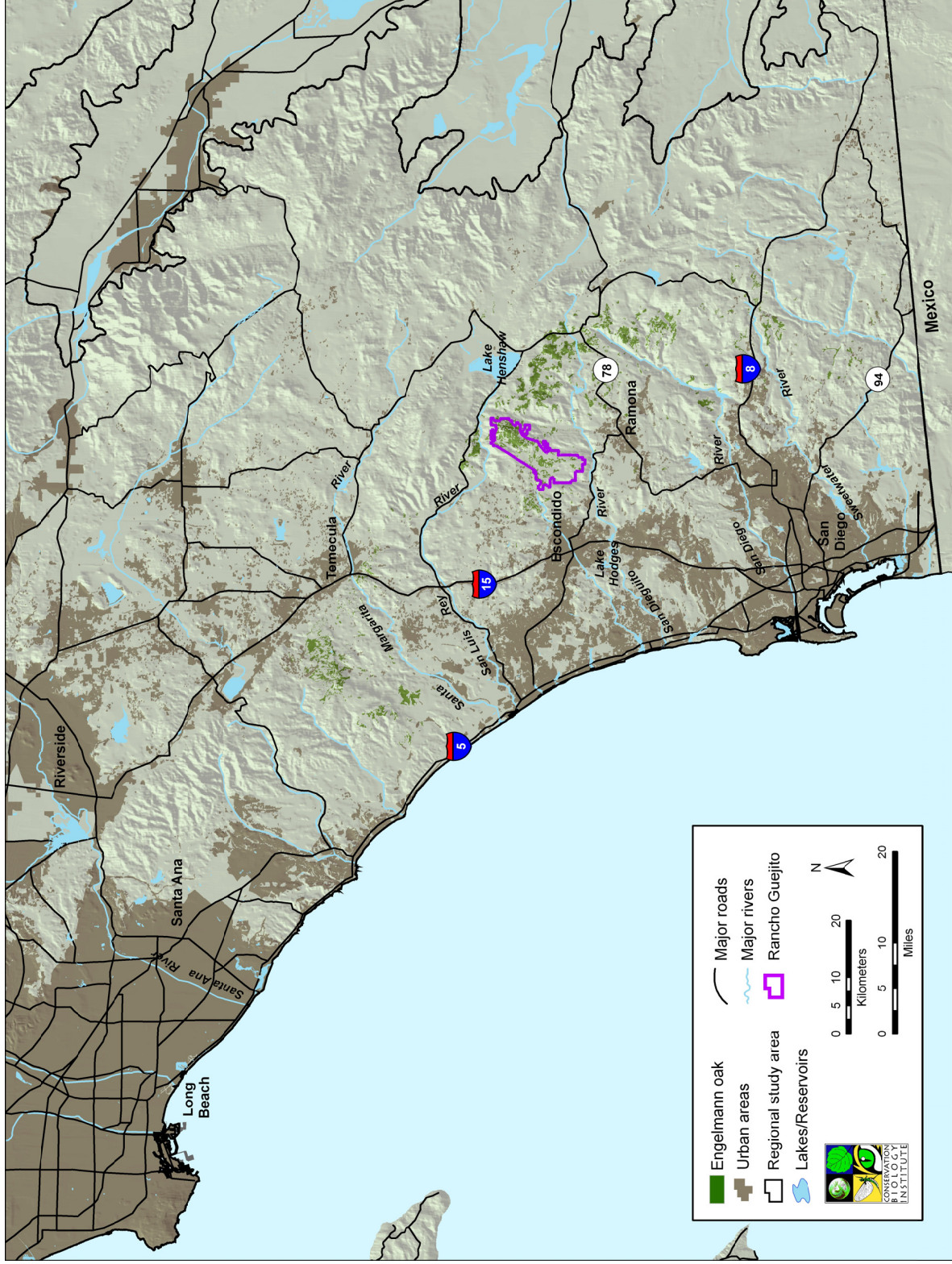


Figure 16. Engelmann oak distribution in the region.

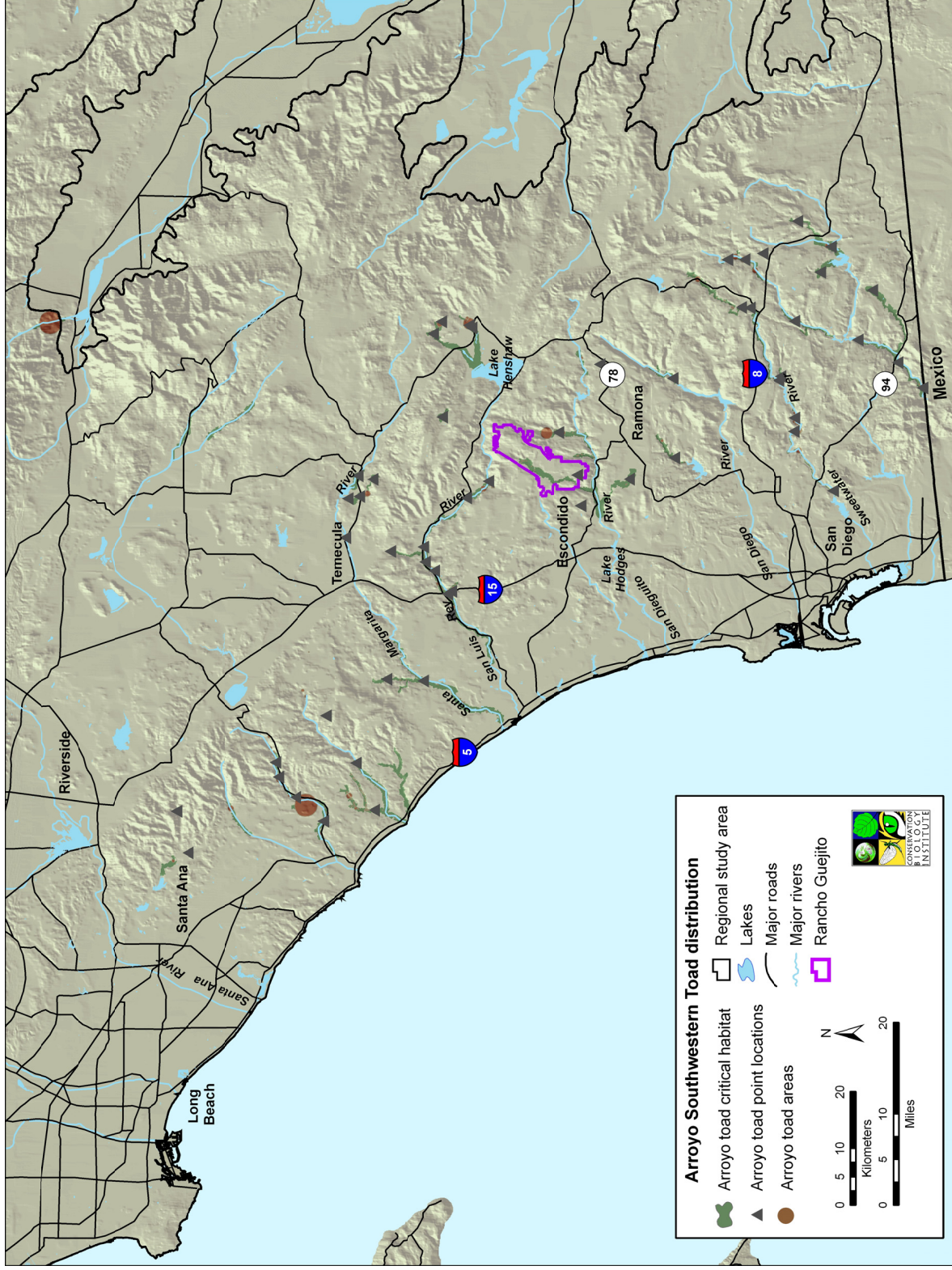


Figure 17. Arroyo toad distribution and Critical Habitat in the region.

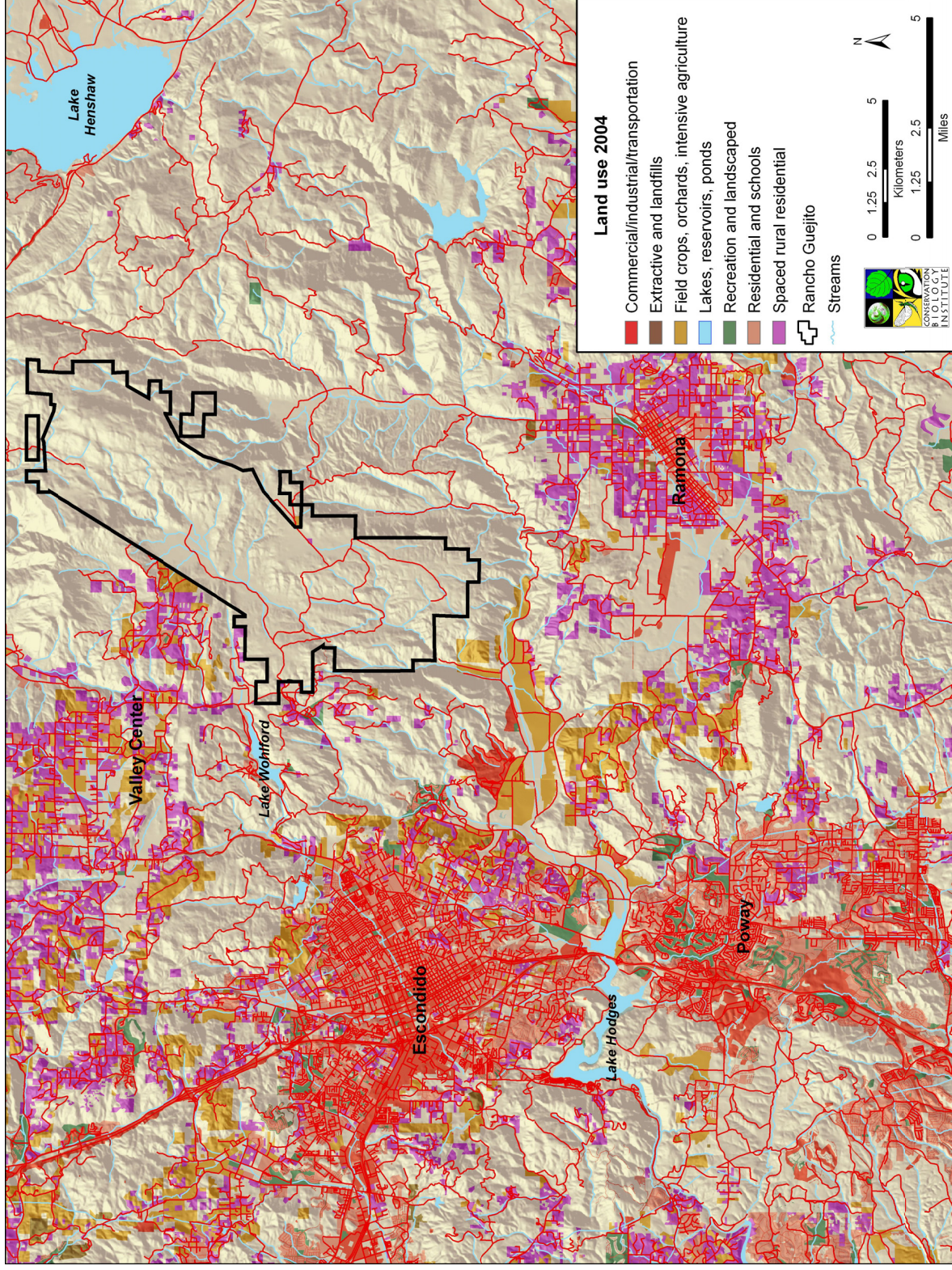


Figure 18. Land cover (2004) and centers of development pressure in the vicinity of Rancho Guejito.

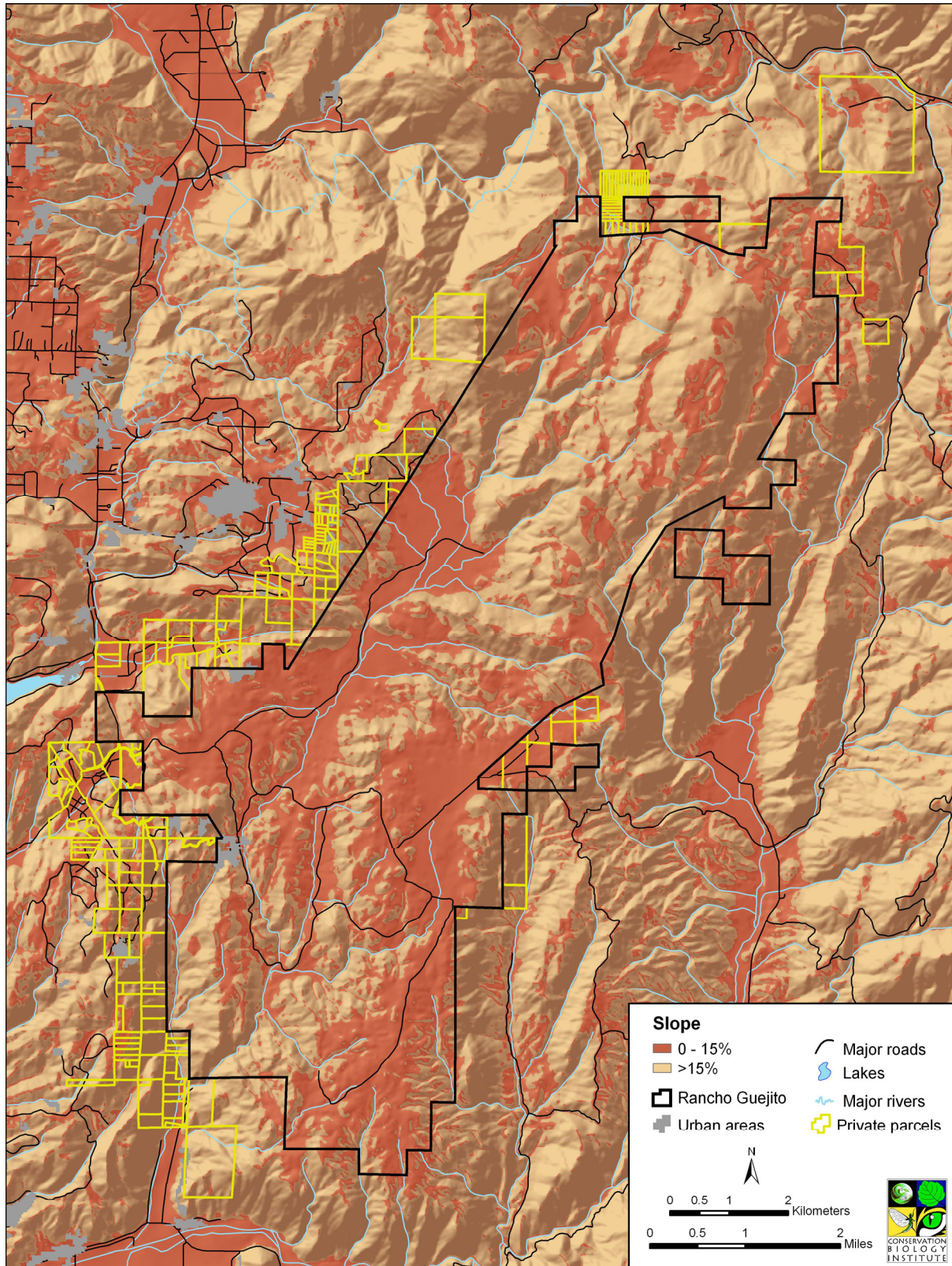


Figure 19. Development potential ($\leq 15\%$ slopes) on private lands in the vicinity of Rancho Guejito, showing adjacent private ownerships.

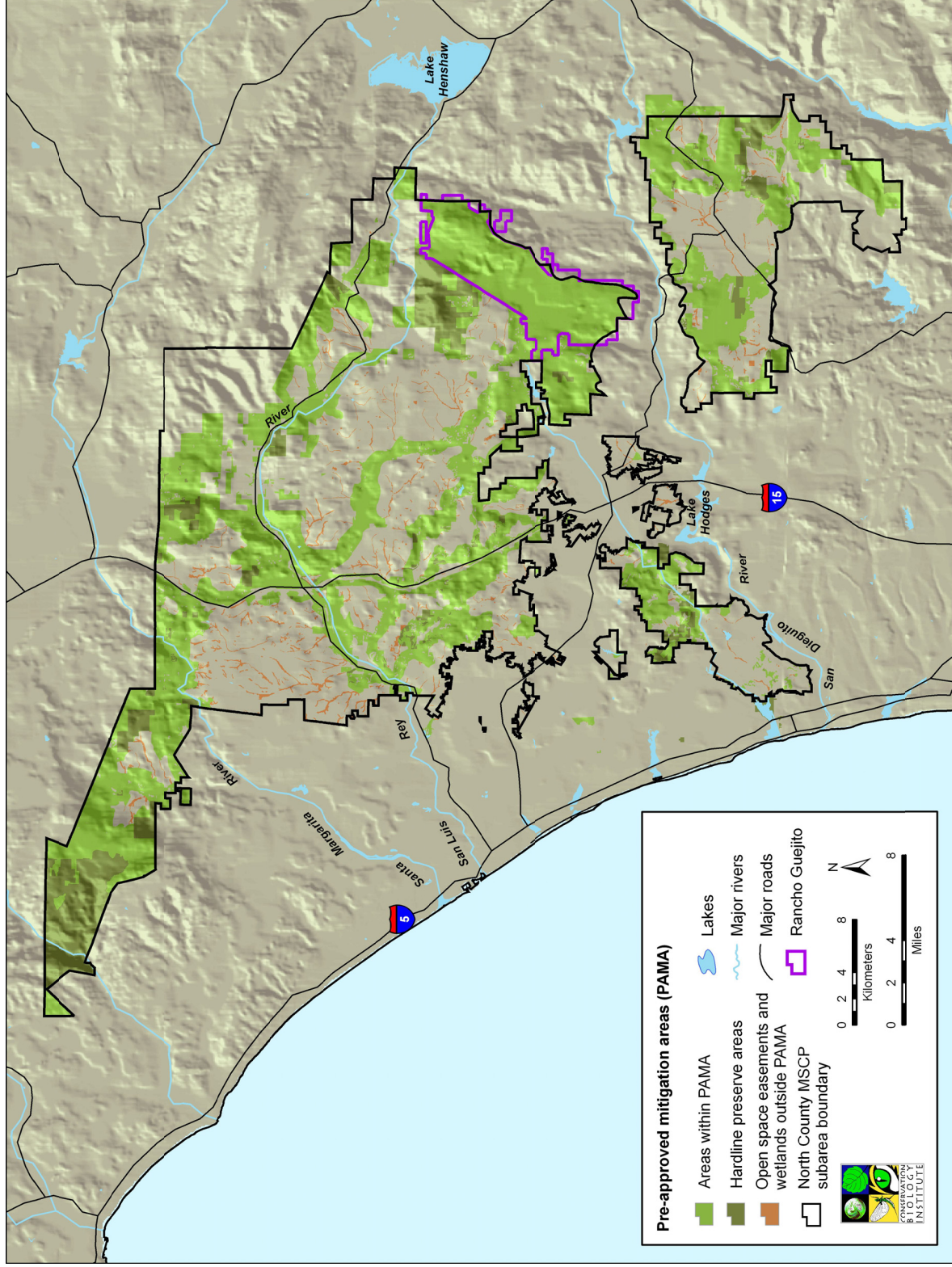


Figure 20. Rancho Guejito core area within the context of the North County MSCP.

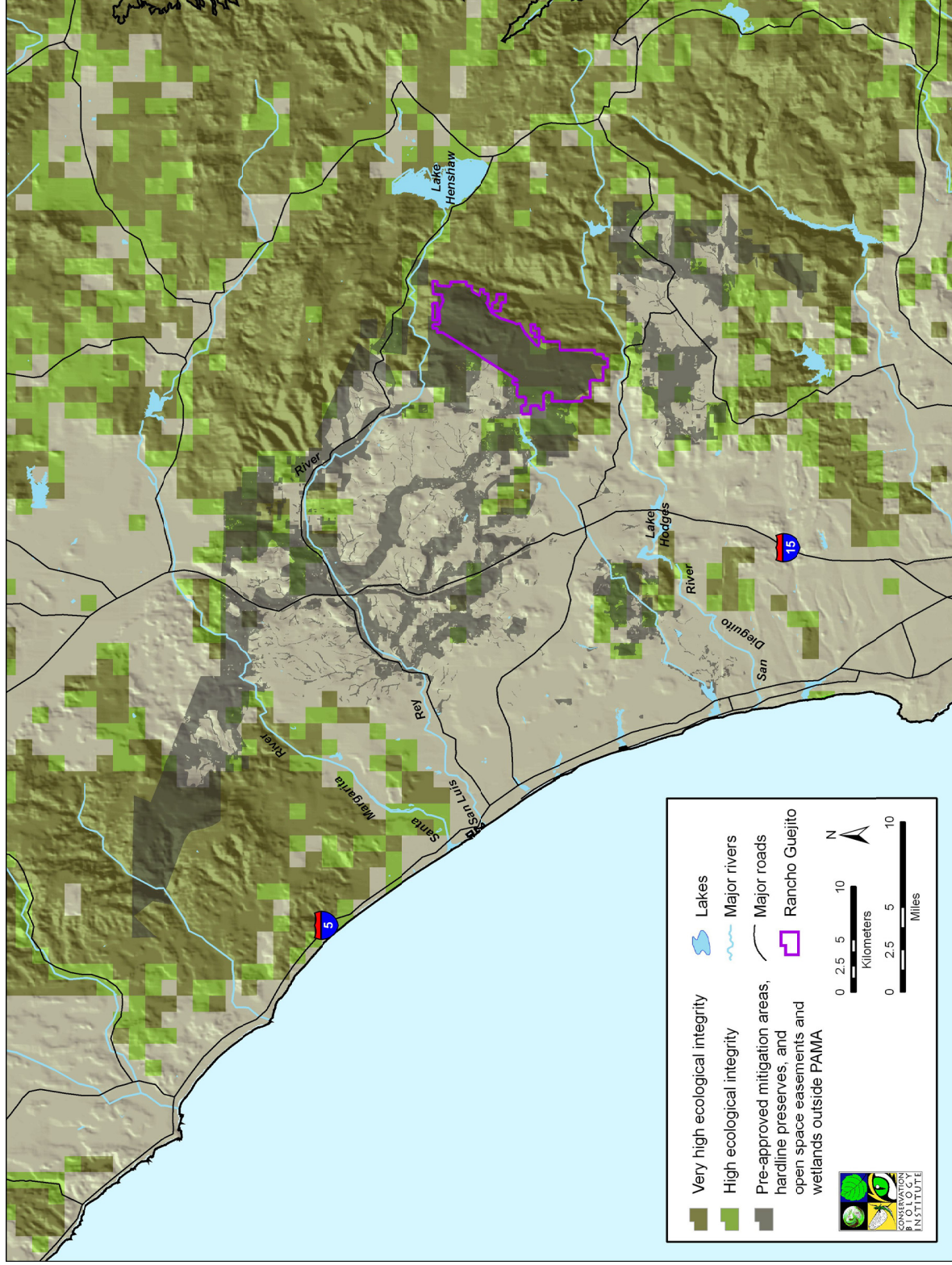


Figure 21. High and very high integrity areas of North San Diego County.

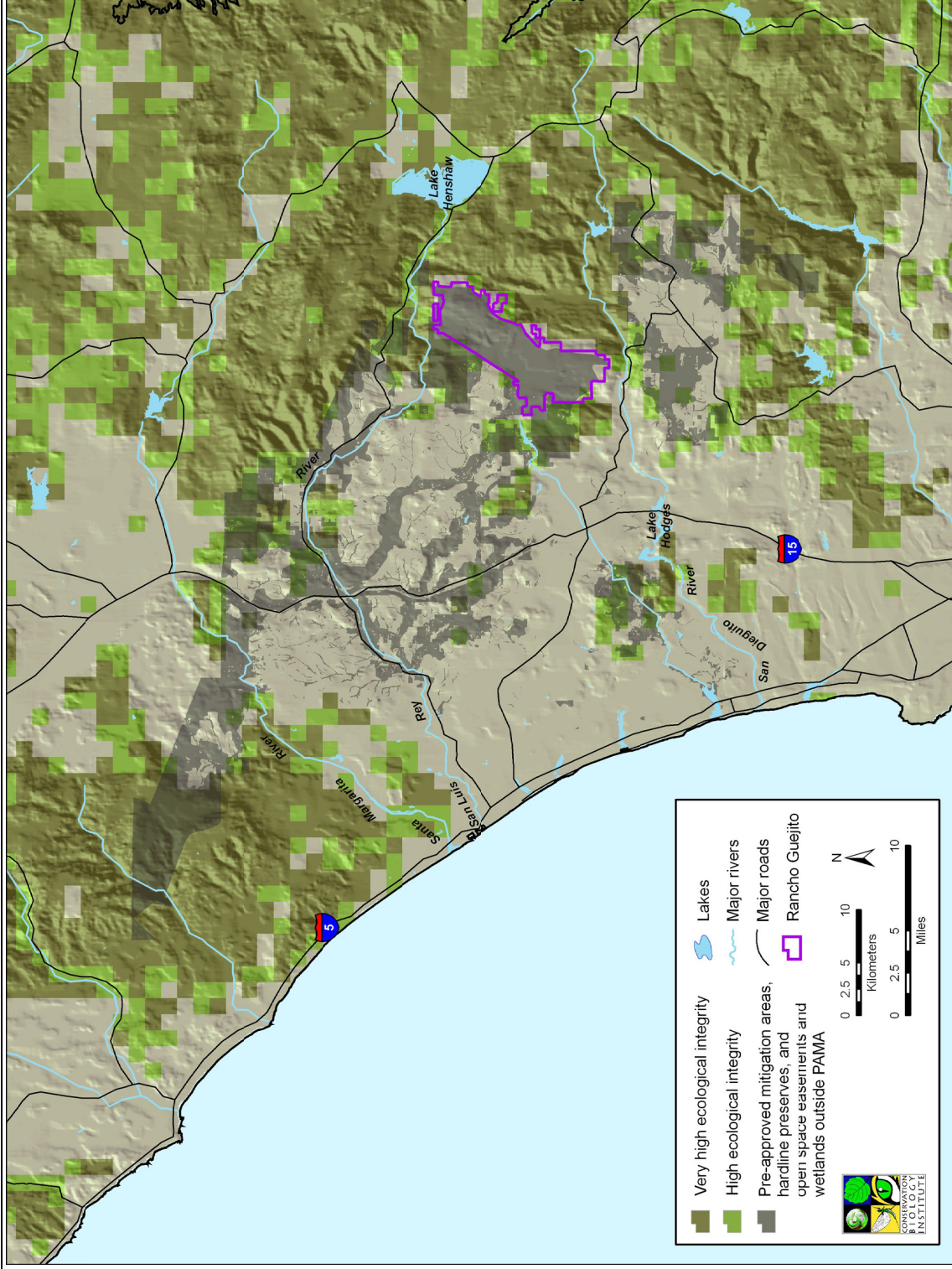


Figure 22. High and very high integrity areas of North San Diego County, assuming development of $\leq 15\%$ slopes on Rancho Guejito.